



ECOLOGY & EVOLUTIONARY
BIOLOGY

EEB Field Station

Pittman Center, TN

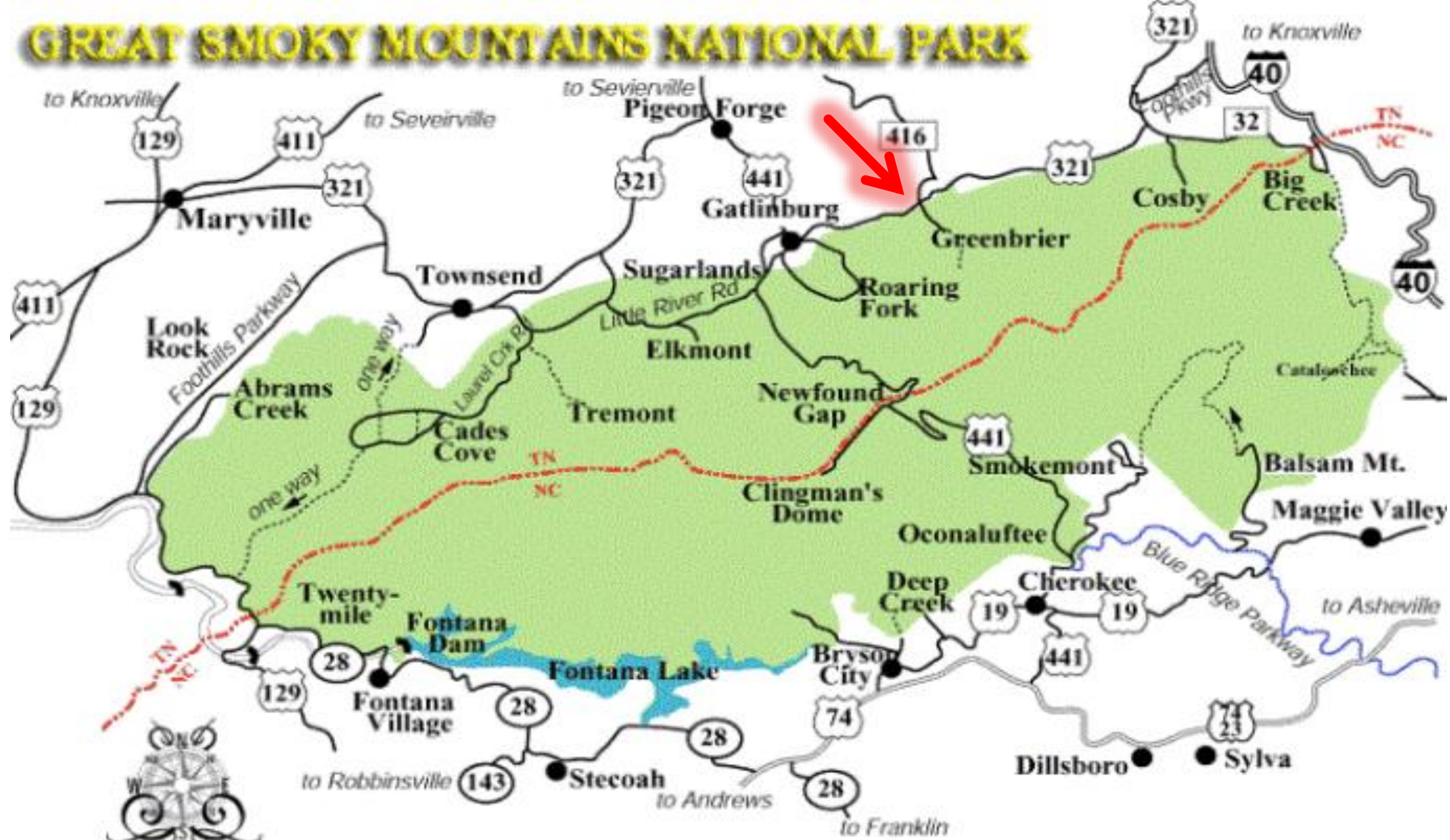
fieldstation.utk.edu

What We Are

- ▶ The Department of Ecology and Evolutionary Biology operates a Field Station in Pittman Center, TN, near Gatlinburg, TN and the Great Smoky Mountains National Park



GREAT SMOKY MOUNTAINS NATIONAL PARK





What We Are

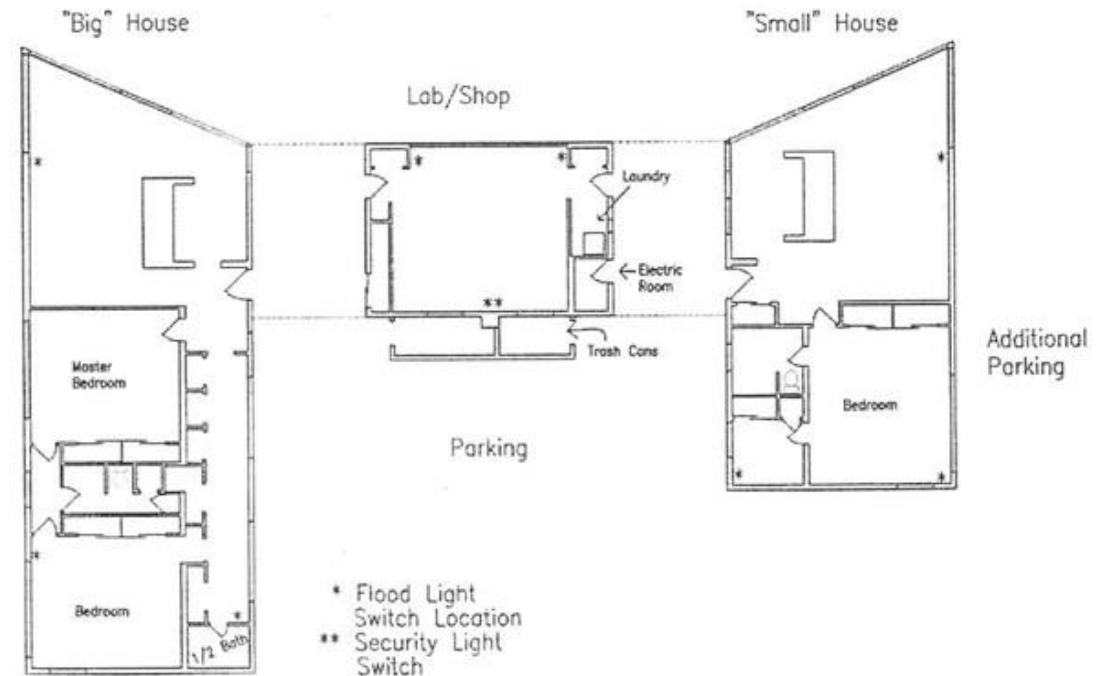
- ▶ **Three facilities – Research Station, Campground, and Bunkhouse.**
- ▶ **Offer a variety of accommodation options making the Field Station ideal for groups of many sizes.**
- ▶ **Encourage use by UT. Facilities can be reserved by any tax-exempt organization.**



Accommodation: Research Station

- ▶ The Research Station comprises two houses with a lab building between them.
- ▶ The East Wing ("Big House") has beds for 6 people, with 2 bedrooms and 1 1/2 bathrooms.
- ▶ The West Wing ("Small House") has beds for 3 people and 1 bathroom.
- ▶ Lab has laundry, sinks, computer and printer.

Building Map



Accommodation: Research Station

- ▶ The Research Station has high-speed wireless internet and cable.
- ▶ Each house contains a fully equipped kitchen, a dining/living area adjacent to the kitchen, and a conference table and whiteboards for meetings .



Accommodation: Research Station



Accommodation: Teaching Facility

- ▶ The Teaching Facility (Campground) sleeps 28 people in open-air lean-to cabins. The facility includes
 - ▶ A modern, handicapped-accessible bathhouse;
 - ▶ A fully equipped, enclosed group kitchen area;
 - ▶ An open-air, covered pavilion for meals and teaching, including microscopes and storage cabinets;
 - ▶ A wet prep area and fire pit with seating;
 - ▶ High-speed wireless internet and cable.
- ▶ Facility available March-October.



Accommodation: Teaching Facility



Accommodation: Teaching Facility



Accommodation: Bunkhouse

- ▶ The “Bunkhouse” has 3 separate bedrooms and beds for 7 people. It does not have a kitchen, so it is best used as an overflow facility for either the Research Station or the Campground.



What we cost

- ▶ Cost is based on two fees: a charge per person per night and a cleaning fee.
- ▶ Research Facility is \$30 per person/night
- ▶ Teaching Facility and Bunkhouse are \$15 per person/night
- ▶ Cleaning fees vary by facility and are charged per reservation



Find Out More

- ▶ Check out the website at fieldstation.utk.edu to
 - ▶ View the online calendar to see if the facility you want is available on the dates you want;
 - ▶ Make a booking request using our online form;
 - ▶ Learn more about each facility and see more photos.



EEB Field Station
fieldstation.utk.edu

See you at your next retreat!